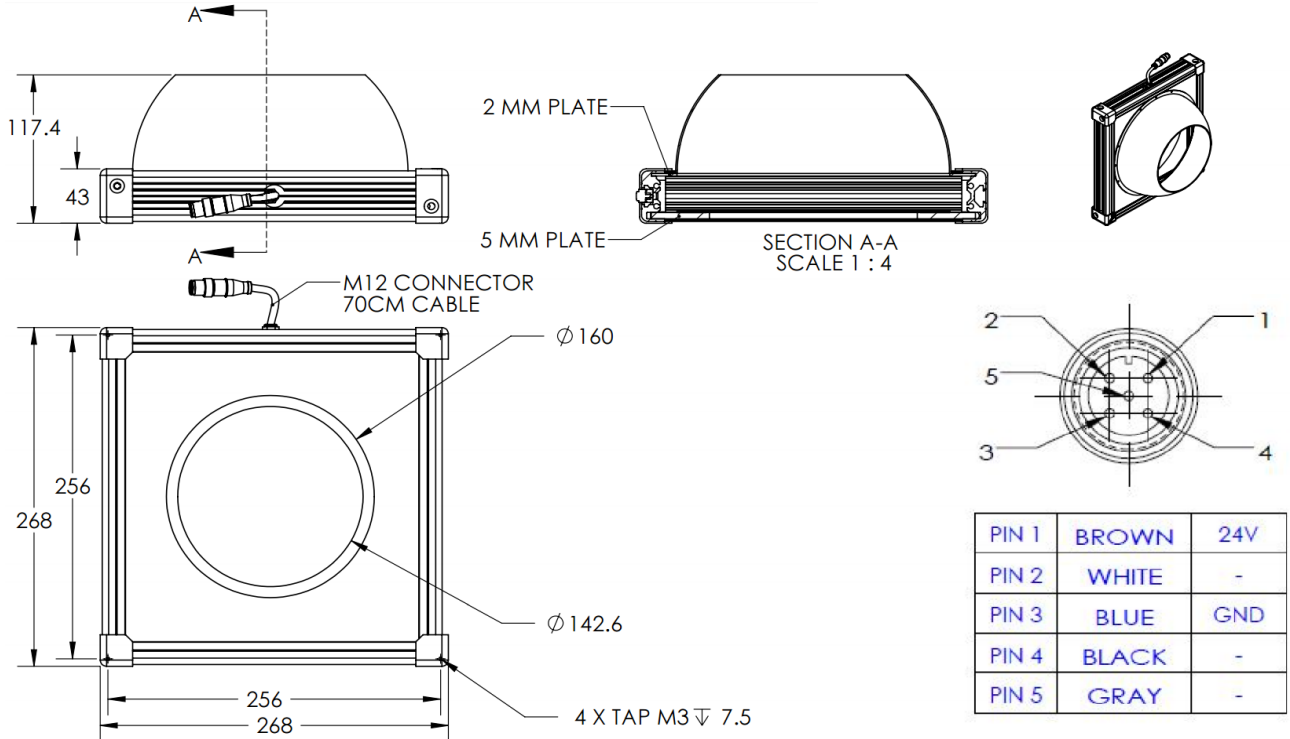


HDLR-00-200-1-B-24V

Lighting Dimension



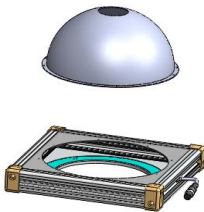

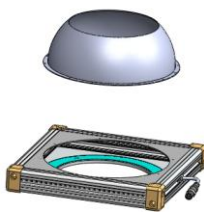
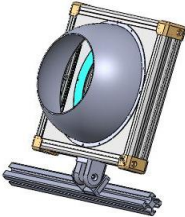
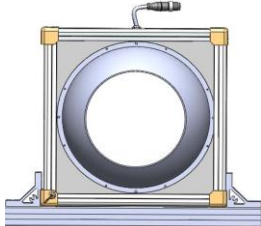
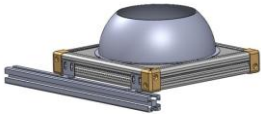
Mechanical Information	
Casing Material	Aluminium
Storage & Operating Temperature Range	Temp 0-60°C, Humidity 20-85%
Weight	2070 g
Length / Outer Diameter	268 mm
Width / Inner Diameter	142.6 mm
Thickness / Height	117.4 mm



HDLR-00-200-1-B-24V

Optical Information			
Part Number	HDLR-00-200-1-B-24V		
LED Colour	BLUE		
Wavelength	(nm)	470	
Intensity (±15%)	(Lux)	1927	1716 1516
Working Distance	(mm)	87	97 107
Illumination (number of rows)	1		
Illumination Active Area			
Active Length / Outer Diameter	(mm)	160	
Active Width / Inner Diameter	(mm)	142.6	
Emission Angle	(deg.)	0	
Eye Safety Class (IEC62471)	II		
Electrical Information			
Lighting Supply Voltage (constant voltage mode)	24V ± 2%		
Continuous Current	(mA)	728	
Power Consumption	(W)	17.47	
Lighting Casing Temperature, Operating after 60 minutes	°C	40.7	
Strobe Mode Specification			
Pulse Operation	YES		
Max. Lighting Supply Voltage (constant voltage power supply)	(V)	Pulsing at 24VDC to 48VDC, 0-10% Duty Cycle Recommended at 36VDC	
Pulse Current, (Max. 10 msec) (constant current power supply)	(mA)	2184	
Max. Trigger Pulse Duration	(msec)	10	
Duty Cycle	0-10%		
Additional Information			
Additional Cooling Method	Attached to machine part for better heat dissipation		
Intensity Controller Selection	SD / SDA-Series		
CE Conformity	YES		
RoHS Compliance	YES		
Connection			
Connector Type (default)	M12 5 PIN CONNECTOR (MALE)		
Cable Length (out from lighting)	(mm)	700	
Pin Configuration	Pin	Signal	Cable Colour
	1	24V	BROWN
	2	-	WHITE
	3	GND	BLUE
	4	-	BLACK
	5	-	GRAY
Extension Cable			
Connector Type (default)	M12 5 PIN CONNECTOR (FEMALE)		
Part Number	EXT-FL-M12F-3M-24V		
Cable Length (out from female connector)	(mm)	3000	
Extension Cable (connect to M12 5 Pin Male Connector from lighting)			
Application			
Illumination Type	Indirect Angular Dome Illumination		
Application Use	Inspecting flat, reflective surfaces, scratches, pits, crack, chip, stains on circular or cylindrical objects, solder inspection and substrate inspection		

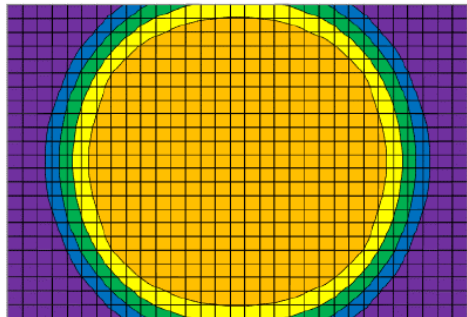
HDLR-00-200-1-B-24V

Advantages Flexible Illuminator	<div style="display: flex; justify-content: space-around;"> <div style="text-align: center;"> <p>Full Dome Cover</p>  </div> <div style="text-align: center;">  </div> <div style="text-align: center;"> <p>Half Dome Cover</p>  </div> </div>		
Easy Mounting	<p>Join Bracket (Angle Mount)</p> 	<p>L Bracket (Vertical Mount)</p> 	<p>L-shaped Plate (Horizontal Mount)</p> 

Uniform Graph (Relative Irradiation Strength) - Representative pattern

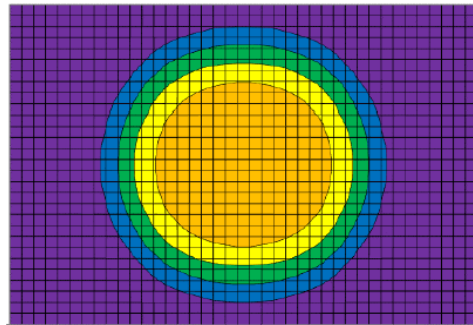
LENS FOCAL LENGTH, F = 8 mm
 CWD = 200 mm
 LWD = 50 mm

COLOUR	TOLERANCE	L X W
Orange	± 10 %	105 X 110
Yellow	± 15 %	115 X 120
Green	± 20 %	125 X 120
Blue	± 25 %	135 X 120
Purple	± 30 %	160 X 120



CWD = 250 mm
 LWD = 100 mm

COLOUR	TOLERANCE	L X W
Orange	± 10 %	80 X 80
Yellow	± 15 %	95 X 95
Green	± 20 %	110 X 112
Blue	± 25 %	125 X 130
Purple	± 30 %	200 X 150



* Each individual box is 5 X 5 mm.

*Disclaimer : The graphs portrayed are for reference only and does not in any way guarantee the quality of this product.