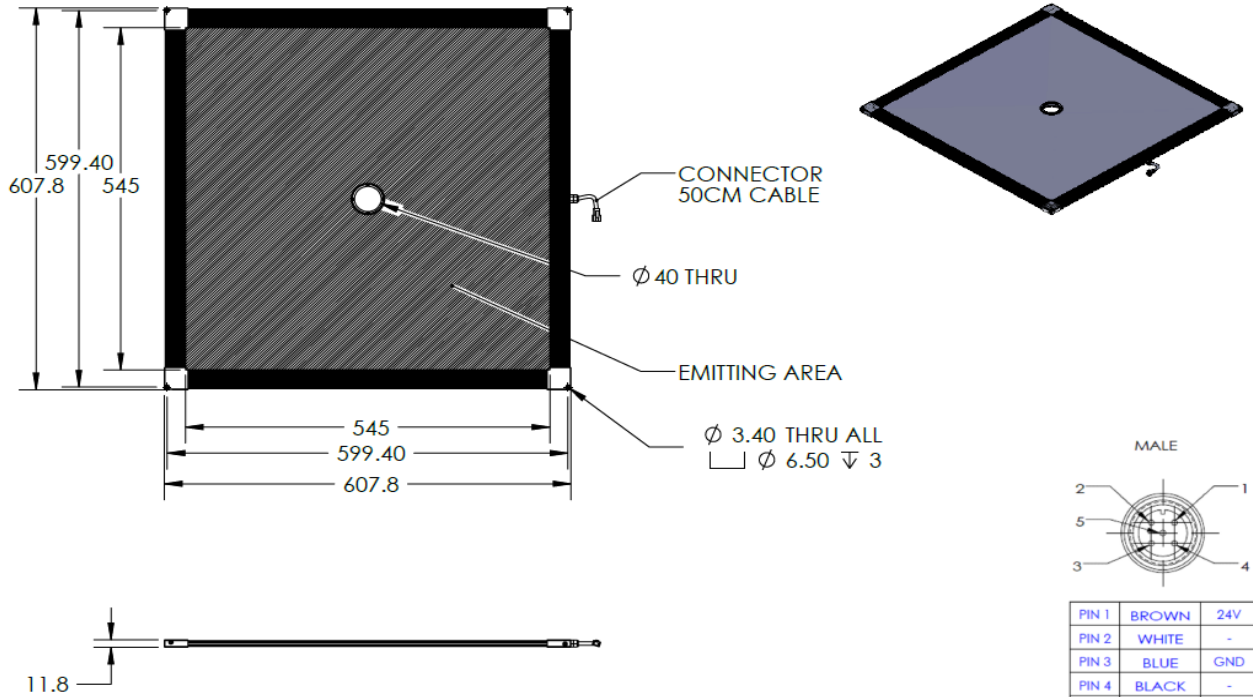


BHDQ2-00-545X545-1-W-24V

Lighting Dimension



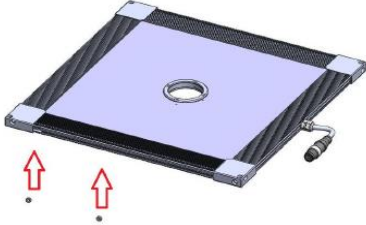
Mechanical Information	
Casing Material	Aluminium
Storage & Operating Temperature Range	Temp 0-60°C, Humidity 20-85%
Weight	4800 g
Length / Outer Diameter	607.8 mm
Width / Inner Diameter	40 mm
Thickness / Height	11.8 mm



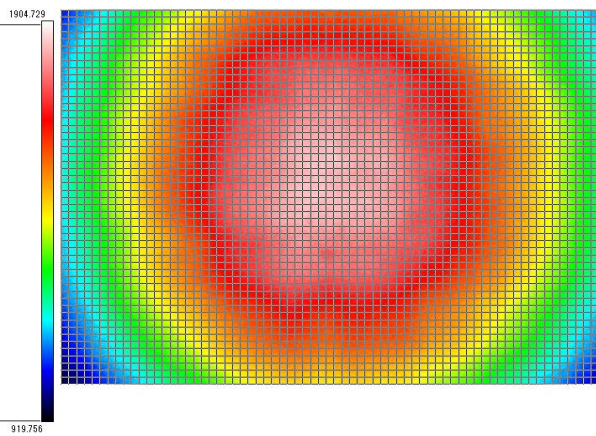
BHDQ2-00-545X545-1-W-24V

Optical Information		BHDQ2-00-545X545-1-W-24V									
Part Number		BHDQ2-00-545X545-1-W-24V									
LED Colour		WHITE									
Wavelength	(nm)	*Refer to the Chromaticity Table below									
Intensity (±15%)	(Lux)	4785.4		4544		4160.6					
Working Distance	(mm)	200		220		250					
Illumination (number of rows)		1									
Illumination Active Area											
Active Length / Outer Diameter	(mm)	545									
Active Width / Inner Diameter	(mm)	40									
Emission Angle	(deg.)	0									
Eye Safety Class (IEC62471)		EXEMPT									
*CHROMATICITY TABLE		X	0.296	0.287	0.307	0.311	X	0.311	0.307	0.33	0.33
		Y	0.276	0.295	0.315	0.294	Y	0.294	0.315	0.339	0.318
Electrical Information											
Lighting Supply Voltage (constant voltage mode)		24V ± 2%									
Continuous Current	(mA)	1440									
Power Consumption	(W)	34.56									
Lighting Casing Temperature, Operating after 60 minutes	°C	30.9									
Strobe Mode Specification											
Pulse Operation		YES									
Max. Lighting Supply Voltage (constant voltage power supply)	(V)	Pulsing at 24VDC to 48VDC, 0-10% Duty Cycle Recommended at 36VDC									
Pulse Current, (Max. 10 msec) (constant current power supply)	(mA)	4320									
Max. Trigger Pulse Duration	(msec)	10									
Duty Cycle		0-10%									
Additional Information											
Additional Cooling Method		Attached to machine part for better heat dissipation									
Intensity Controller Selection		SD/SDA-Series									
CE Conformity		YES									
RoHS Compliance		YES									
Connection											
Connector Type (default)		M12 5 PIN CONNECTOR (MALE)									
Cable Length (out from lighting)	(mm)	500									
Pin Configuration		Pin		Signal		Cable Colour					
		1		24V		BROWN					
		2		-		WHITE					
		3		GND		BLUE					
		4		-		BLACK					
		5		-		GRAY					
Extension Cable											
Connector Type (default)		M12 5 PIN CONNECTOR (FEMALE)									
Part Number		EXT-FL-M12F-3M-24V									
Cable Length (out from female connector)	(mm)	3000									
Extension Cable (connect to M12 5 Pin Male Connector from lighting)											
Application											
Illumination Type		Diffused Illumination									
Application Use		Robotic picking, inspection for parts identification & missing parts, visual inspection for large workpiece, measuring stamp dimensions for press products									

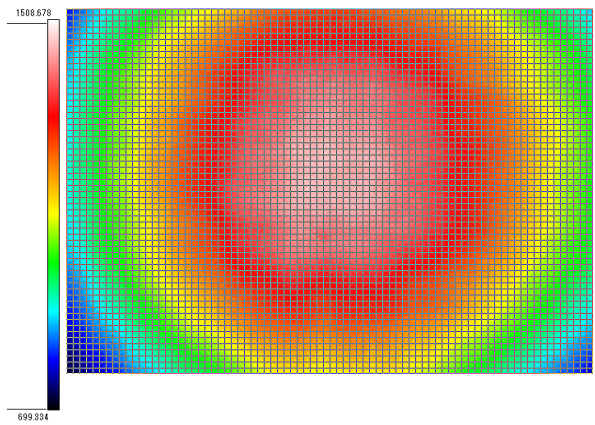
BHDQ2-00-545X545-1-W-24V

Advantages	
Easy Mounting	

Uniform Graph (Relative Irradiation Strength) - Representative pattern



Working Distance = 650 mm
FOV= 693 X 520 mm



Working Distance = 750 mm
FOV= 800 X 600 mm